

* Na tu long Dispele kain tana
 em bilong bikpela kain/na
 komuniti harnamas na ol lida
 kisin gutpela nem/marar i kisin
 bikpela luksave tru.
 * Dispele taim ol lida's na
 Marar i save soim na uskim
 kamapim strong o para insaf
 long bel bilong ol (mipela kain
 "sim")

ol dispele kain i go pa tru em;
 mipela i go clear system i bin
 usk bipo tru i kam trap long mas.
 So nu stap o i go biper clear na
 i go marer boroj clear i lukatim
 na besim olgeta kain pasin na
 usk bilong ol dispele singing -
 Fubuna!

HUSAIT IGO PAS LONG DISPELA SAVE?

Mipela bin luksave sistem ol-
 tambuna singing i go pua i-
 manung tru; Na mipela go-
 bikpela kunging tru esem dispele
 paer mas na ken tu olgeta
 na dispele pasin mas i stap long
 sampela yia i kam binau!

MIPELA BAI LUK SAVE LONG WANEM SAMTING?

DISPELA BUK EM BILONG RIKODIM SAVE BILONG TIMBUNA



MIPELA KISIM PINIS TOK SAVE BILONG PROJECT.
 MIPELA TOK ORAIT LONG OL SAMTING MIPELA
 RAITIM LONG HIA BAI KAMAP LONG KOMPUTA.
 MIPELA TOK ORAIT LONG PUTIM LONG PABLIK.
 [Rausim hap hap long laik]

Nem bilong mipela:

MAX DAINGER

Or maror bai na inap givim
 of dispela strong o sima ego -
 nambaut long husuf inuwap.
 Long ol dispela kain yet o pasin
 em bin stap long taim fru kain
 inap long mas.

Mi save lukim ol samting save
 kain long dispela wadk redi na
 taim singsing tumbuna! kainap em;
 a. ol kataful tumbuna bilas osem,
 *kumul grass *mado *pic teet
 *Purpur *bees *na ol smel lip diwai.
 Na dispela pasin bihainim stret -
 singsing save kainap long style na
 wet kuong em stret, negat foals
 bogorap! Yu loci lukim stret
 na dispela namanas o bung -
 wantaim long kainapim olgeta
 kain usok.

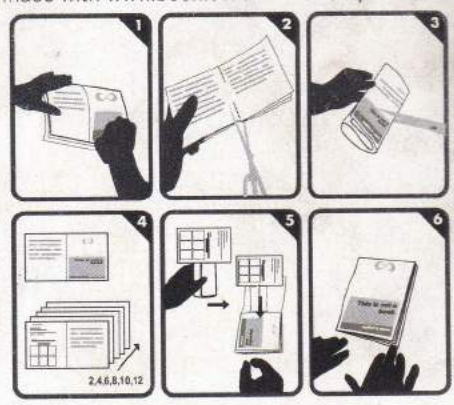
YU LUKIM WANEM OL SAMTING?
 YU KISIM WANEM SAVE LONG OL DISPELA
 SAMTING?
 SAPOS YU LAIK YU INAP DRAWIM O PUTIM
 POTO LONG HIA



TK REITE NOTEBOOKS

Teaching & Learning Notebook Tok Pisin
 TK Reite Notebooks v.1
 2015-02-15 & CC BY-NC-SA
 Published by Proboscis
proboscis.org.uk/projects/tk-reite-notebooks

made with www.bookleteer.com from proboscis

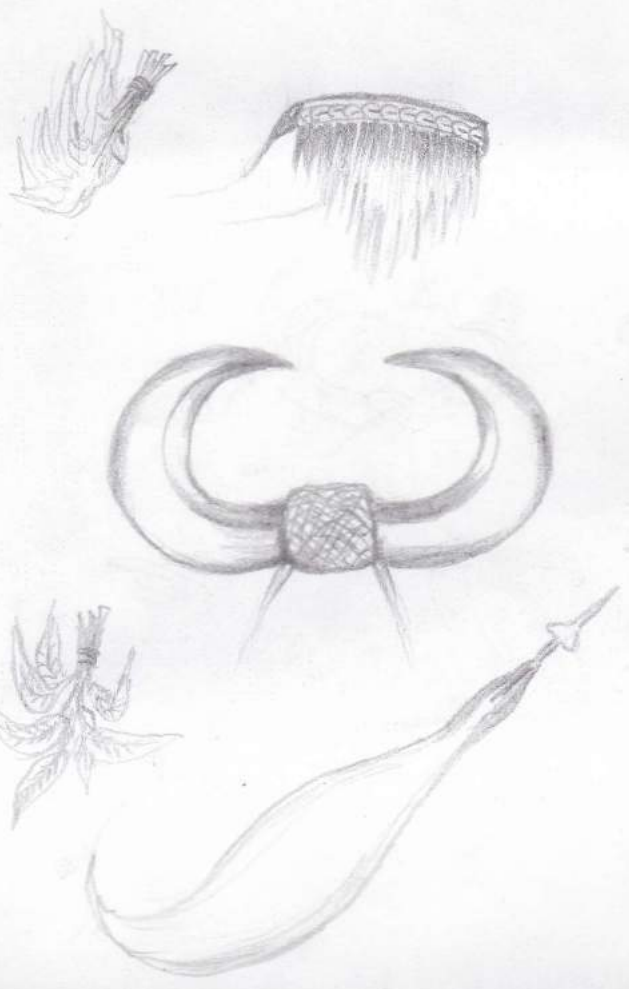


<http://bktr.it/1CwuERD>

BAI YU GO WE LONG LUKIM NA PAINEM AUT
 SAVE LONG DISPELA SAMTING?

Na yet mi grat save osem dispela
 kain pasin bilong singsing tumbuna
 i pinis olgeta. wok bilong mi em
 long lukim o wok redi wantaim
 sampla astingting na bihain
 sindaun toktok wantaim ol maror.
 -Pas fru mi bai toktok wantaim
 Maror bilong clan mi stap -
 -Na dispela Maror bai go lukim
 o selim than buai na brus long
 narapla Maror.
 -Tupela wanbelim pinis orait
 dispela pasin kastam bilong singsing
 tumbuna bai kainap bihainim
 tingting osem mi astim!

Na nau yet long despela taim long semsim save o pasin kastam mi lainum long Reite. Maror o kutura giwin pranti save tru osem; pain bilong lukatin bus graun na solabara Igat ogeta kain samting mupela nudim istap long insait long despela bus graun na tu long solabara.



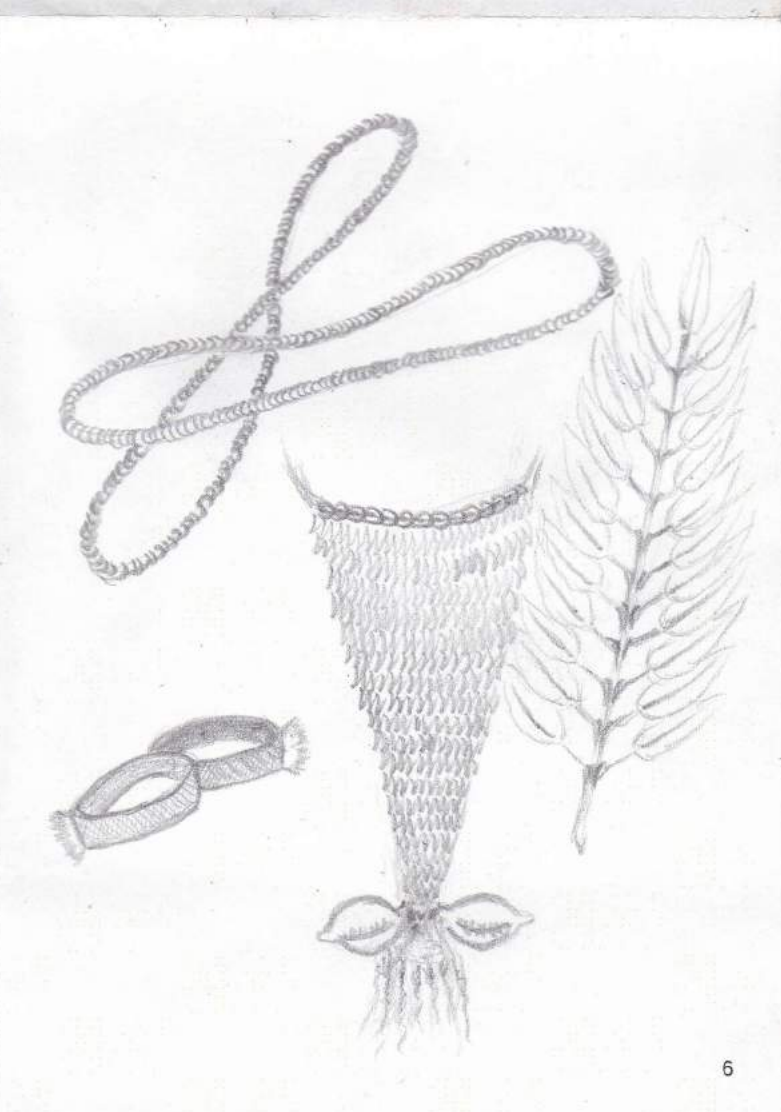
YUPELA BIN STORI LONG SAMPELA NARAPELA SAMTING A? WANEM SAMTING NA BILONG WANEM YU BIN TINGIM?

Yes stori liklik osem ol dispela ol tumbuna pasin i wok long ego pinis now. Na askim tru wanem wei tru bai maror i giwin ol dispela strong (sima) long bihainim rot na pasin bilong kamapim despela Kastam. Toktok kamap o maror autim osem kusait i barim tok na bihainim ogeta kain pasin bilong kamapim despela kastam em ol displa lain tasol.



* mi gat pasin bilang usabel na
 usokbung, qit tru anit long
 of maver insait long of clans
 * na bickela tingting tru long
 * mi o kainum of narapela/yuts-
 pikinuu i kam bikan.

WANEM STORI YU BIN HARIM O WOKIM TAIM
 YUPELA WOKABOUT WANTAIM?



YU LAIK TOK AUT LONG SAMPELA NARAPELA
 SAVE YU BIN KISIM TAIM YU BIN RAUN?

Yes mi lainum na kisim planti
 save tru. Pastaim tru mi harim
 stori long pasim kastam bilang
 kamapim garamut. Oh karkar-
 island (komoria) long presentim
 tupla clan bilang mipela-na
 mipla wok redim kailkaina pig
 long tok ~~to~~ namamasim oh.

Ah long dispela kain pasin bilang
 wok kastam (garamut) last yia
 of Bangme (Karkar Island) i
 soim o kamapim sing sing tumbuna
 na giyim garamut hong aib post